



# SecureAuth®

## Web Integration with Forms Based Authentication

**Contact:**  
MultiFactor Corp. Support  
[support@multifa.com](mailto:support@multifa.com)  
Office 949.777.6959

## MultiFactor Corporation (MFC)

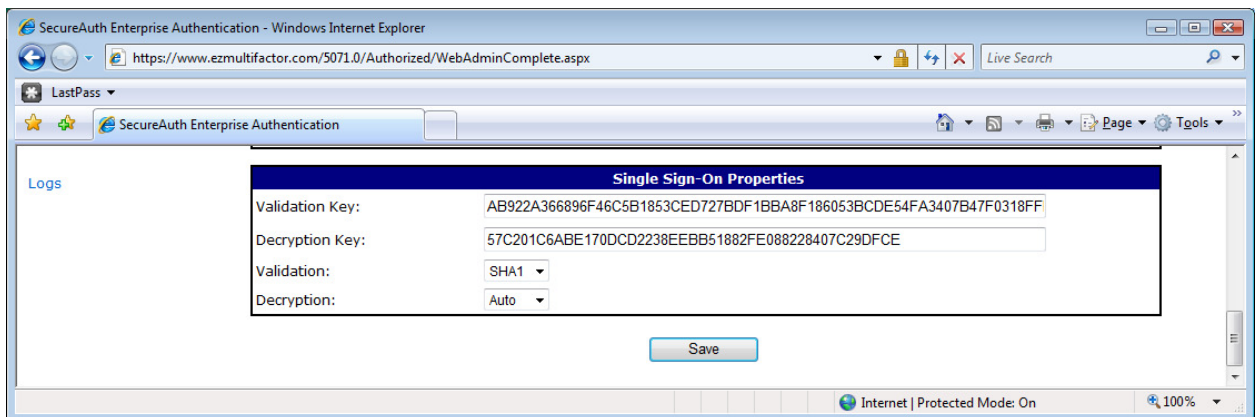
8965 Research Drive  
Irvine, CA 92618  
[support@multifa.com](mailto:support@multifa.com)

## Walkthrough - How to secure your website using .Net Forms Based Authentication and SecureAuth®

1. SecureAuth® and your website will need to share the same Validation Key, Decryption Key, Validation and Decryption method in their web.config files
2. To begin, generate a unique keys in the SecureAuth instance:
  - Logon to the SecureAuth admin console
  - Select SecureAuth instance
  - Go to “Post Authentication”, scroll down to “Single Sign-On Properties”  
(See Image #1)

Generate:

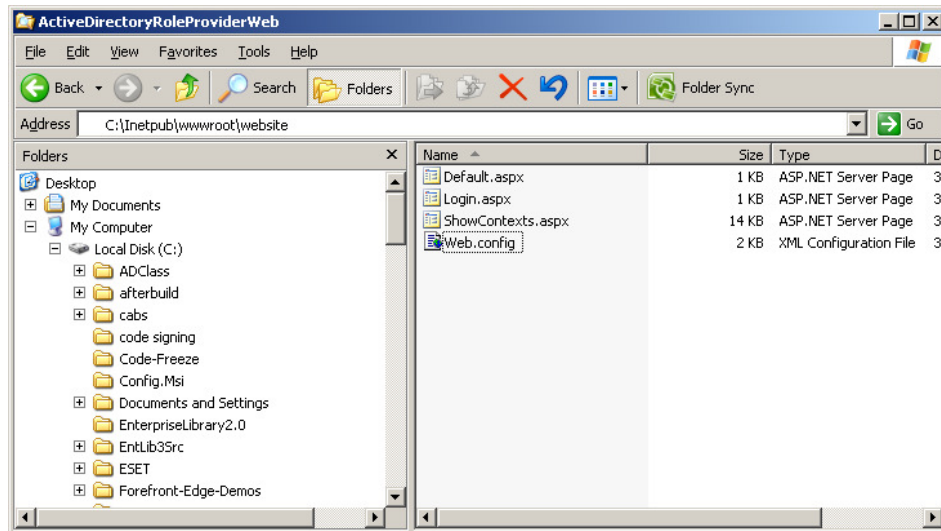
1. Validation Key
2. Decryption Key
3. Validation Method (SHA1, MD5, 3DES, AES)
4. Decryption Method (Auto, DES, 3DES, AES)



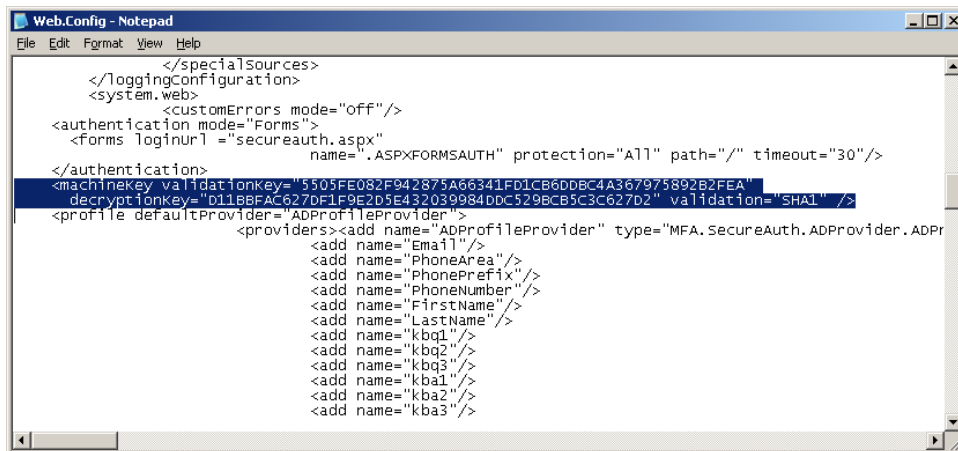
**Image #1 – SecureAuth Single Sign-On Settings**

3. Copy the generated keys to a text file. (Notepad, etc)

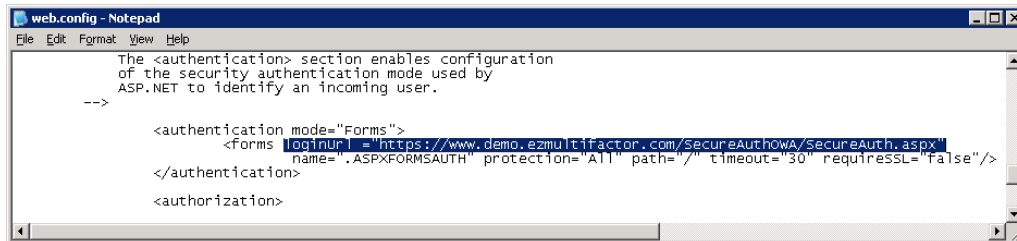
- Go to the web.config file of your website, open it Notepad.



- Find the machine key section in the web.config file, and replace it with the machine key generated in Step #2.



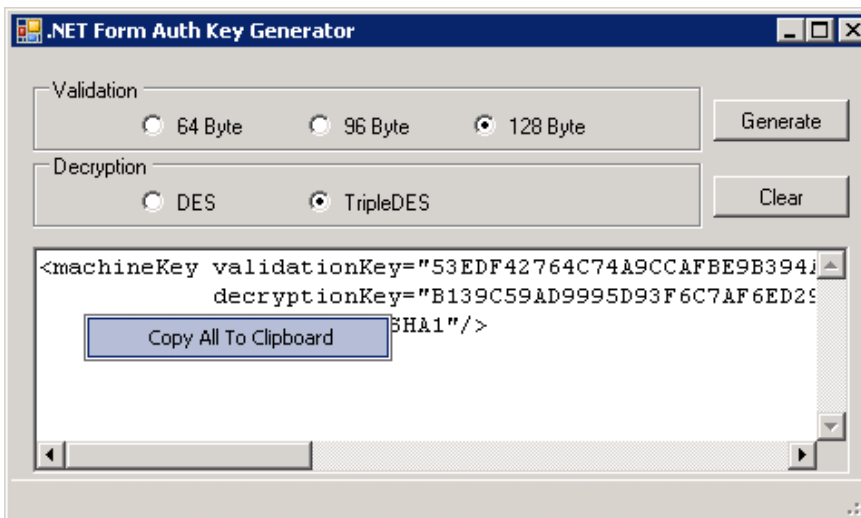
6. While you are in the same web.config file, search for the “authentication mode” section
  - Make sure “authentication mode” is set to “**Forms**”
  - Replace the value of loginUrl with the URL of SecureAuth’s virtual directory login page, using the fully qualified domain name



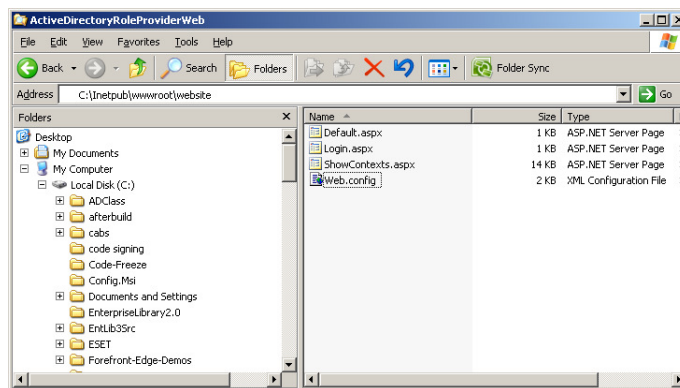
7. Save this file
8. Finished! When your user tries to access the protected content from your website, he or she will get redirected to SecureAuth’s login page for authentication. Once authenticated by SecureAuth®, the user will be sent back to your protected content automatically.

## Appendix A:

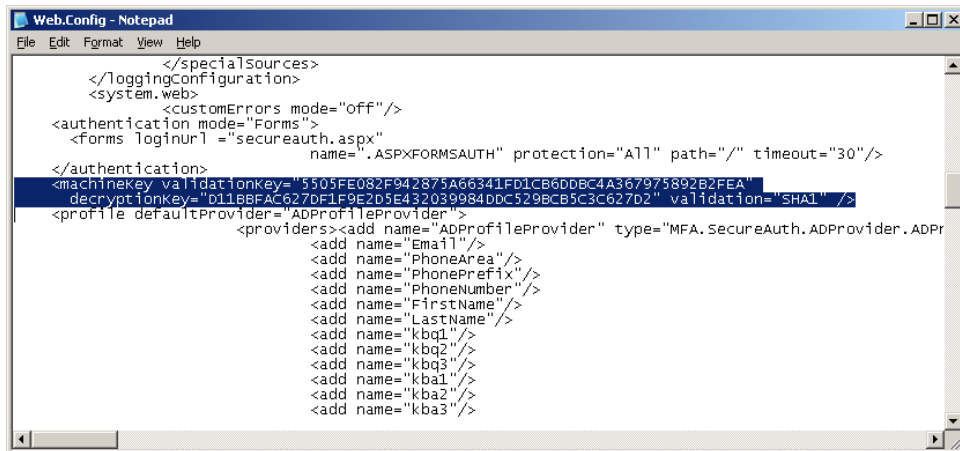
1. For enterprises who wish to generate the Machine/Validation keys outside of SecureAuth, MultiFactor will provide a key generation tool called FormsAuthKeyGen.exe
  - This application will generate a unique validationKey and decryptionKey based on your input. The output will be used as the shared secret between your website and SecureAuth®
2. Select the Validation Key strength and a Decryption type
3. Click Generate to generate your unique machine key
4. Right Click on the result, and select “Copy All To Clipboard”



9. Go to the web.config file of your website, open it Notepad.



- Find the machine key section in the web.config file, and replace it with the machine key generated in Step 5.



```
Web.Config - Notepad
File Edit Format View Help
</specialSources>
</loggingconfiguration>
<system.web>
  <customErrors mode="off"/>
  <authentication mode="Forms">
    <forms loginurl="secureauth.aspx"
           name=".ASPXFORMSAUTH" protection="All" path="/" timeout="30"/>
  </authentication>
  <machinekey validationkey="5505FE082F942875A66341FD1CB6DDBC4A367975892B2FEA"
              decryptionkey="D11BBFAC627DF1F9E2D5E432039984BDC529BCB5C3C627D2" validation="SHA1" />
  <profile defaultProvider="ADProfileProvider">
    <providers><add name="ADProfileProvider" type="MFA.SecureAuth.ADProvider.ADP
    <add name="Email"/>
    <add name="PhoneArea"/>
    <add name="PhonePrefix"/>
    <add name="PhoneNumber"/>
    <add name="FirstName"/>
    <add name="LastName"/>
    <add name="kba1"/>
    <add name="kba2"/>
    <add name="kba3"/>
    <add name="kba1"/>
    <add name="kba2"/>
    <add name="kba3"/>
```

- Open the SecureAuth console and input the Validation/Machine Keys:

- Logon to the SecureAuth admin console
- Select SecureAuth instance
- Go to "Post Authentication", scroll down to "Single Sign-On Properties"

Input:

- Validation Key
- Decryption Key
- Validation Method (SHA1, MD5, 3DES, AES)
- Decryption Method (Auto, DES, 3DES, AES)

